

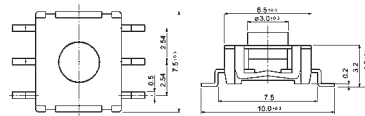
Specifications:

| | | |
|------------------------|----------------|---|
| Contact rating: | TMS 1 | 48 V DC, 50 mA, max. 1 W |
| | TMS 3 / TMSE 3 | 24 V DC, 30 mA, max. 0,6 W |
| Contact resistance: | | < 100 mΩ |
| Insulation resistance: | | > 100 MΩ at 100 V DC |
| Dielectric strength: | | 250 V, 50 Hz for the duration of 1 minute |
| Operating temperature: | | - 25° to + 70° C |
| Mechanical life: | | minimum 100 000 operations |
| Contacts: | | silver-plated, terminals tin-plated; TMSE 3 with ground terminals |
| Material: | TMS 1 | case: 6TPA resin; button: silicon, black; frame: stainless steel |
| | TMS 3 | case: PA; button: PA, black; frame: stainless steel |
| | TMSE 3 | case: PA washable; button: silicon, grey; frame: stainless steel |
| Operating force: | TMS 1 / TMSE 3 | 2,0 N |
| | TMS 3 | 1,2 N |
| Mounting: | | on pc-board – SMD |

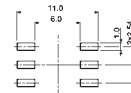
Models: Switching functions

TMS 1
travel 0,5

off – mom

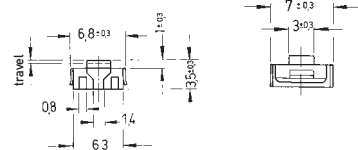


Circuit diagram:



TMS 3
travel 0,25

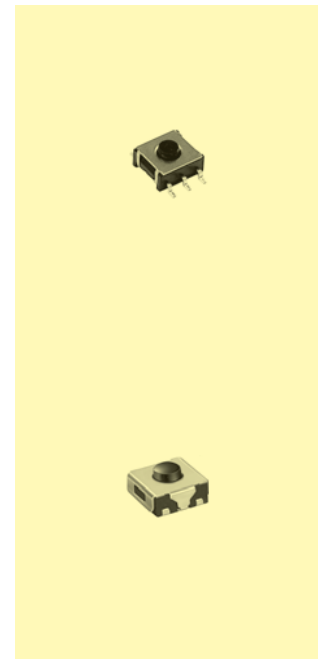
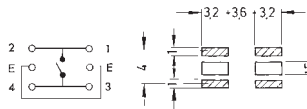
off – mom



TMSE 3
travel 0,5

off – mom

Circuit diagram:



| | | |
|-----------------------|------------|--|
| Soldering conditions: | TMS1 | reflow-soldering – max.: 40 sec, 230° C peak temperature: 250° C |
| | TMS3/TMSE3 | reflow-soldering – max.: 40 sec., 230° C peak temperature: 255° C |

Packing see next page



Tact Switches

Specifications:

| | |
|------------------------|---|
| Contact rating: | 48 V DC, 50 mA, max. 1 W |
| Contact resistance: | < 100 mΩ |
| Insulation resistance: | > 100 MΩ at 100 V DC |
| Dielectric strength: | 250 V, 50 Hz for the duration of 1 minute |
| Operating temperature: | - 25° to + 70° C |
| Mechanical life: | minimum 300 000 operations |
| Contacts: | phosphor bronze, silver-plated |
| Terminals: | PC terminals |
| Material: | case: 6TPA resin, washable; frame: stainless steel button: perbunan, black |
| Operating force: | 2,0 N |
| Mounting: | on pc-board |
| Soldering conditions: | auto-soldering – max.: 6 sec, 275° C ± 10° C |

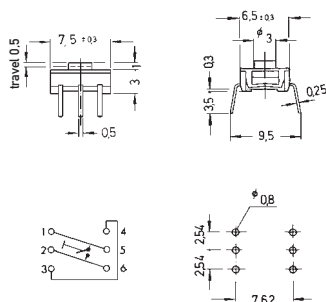
3

Models: Switching functions

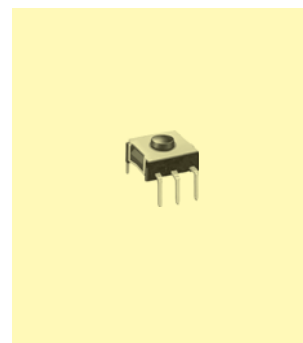
TME 1

off – mom

Circuit diagram:



washable



Packing series TMS (previous page): sticks or tapes
for order on tape: additional to type number: T
example of order: TMS 1 T

| Models | Stick | Tape | Reel | Tape width | Rapport |
|--------|---------------------|-------------|----------|------------|---------|
| | | | | (A) | (R) |
| TMS 1 | 50 pieces; L 400 mm | 1000 pieces | Ø 330 mm | 24 mm | 16 mm |
| TMS 3 | 50 pieces; L 375 mm | 1000 pieces | Ø 330 mm | 16 mm | 12 mm |
| TMSE 3 | 50 pieces; L 375 mm | 1000 pieces | Ø 330 mm | 16 mm | 12 mm |

