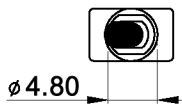
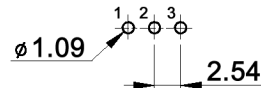


Toggle is shown in position 1



P.C. MOUNTING



Specifications:

- Contact rating: 0.4VA max., 20V max. (AC or DC)
- Contact resistance: 20mOhm max. at 2-4V DC
- Insulation resistance: 1 000MOhm min.
- Dielectric strength: 1 000V RMS
- Operating temperature: -30°C to +85°C
- Mechanical life: 50 000 make-and-break cycles
- ESD resistance: 6kV
- Material: Case / bushing: glass filled nylon 6/6, retardant, heat stabilized (UL94V-0)
Actuator: glass filled nylon 6/6
Terminals / contact: gold plated copper

CONTACT ARRANGEMENT

| code for x | function | toggle in position 1 | toggle opposite to pos. 1 |
|------------|----------|----------------------|---------------------------|
| D | On-On | 2-3 | 1-2 |
| F | On-Mom | | |

| code for x | function | toggle in position 1 | toggle in center | toggle opposite |
|------------|-------------|----------------------|------------------|-----------------|
| E | On-Off-On | | | |
| G | Mom-Off-Mom | 2-3 | open | 1-2 |
| H | On-Off-Mom | | | |



| | | |
|---|-------|------|
| Tolerances: 0.00: ±0.25mm 0.0: ±0.40mm | Date | Name |
| | 05/09 | dr |
| | | |
| | | |
| | | |

TST 1 x ESD

| | | | | | |
|---------------|------|------|-----------------------|-----------------|------|
| Modifications | Date | Name | knitter-switch | 30 18 19 | Page |
| | | | | | 1/1 |