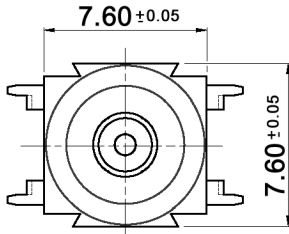
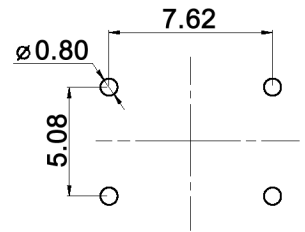
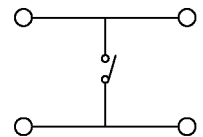


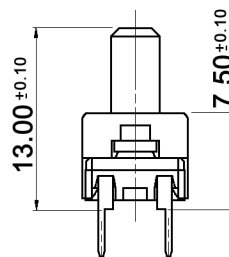
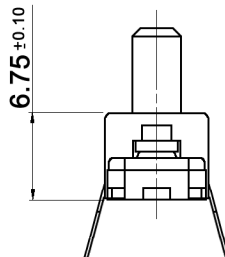
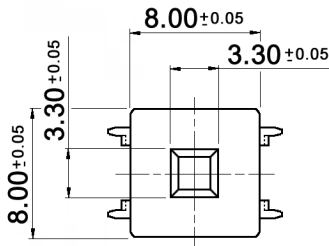
DRILLING PLAN



CIRCUIT DIAGRAM



KTT 107-B



Specifications:

- Contact rating: 20mA, 24V DC; max. 0.5W
- Contact resistance: 100mOhm max.
- Insulation resistance: 1 000MOhm min. at 100V DC
- Dielectric strength: 250V, 50Hz for the duration of 1 minute
- Operating temperature: -40°C to +85°C
- Mechanical life: min. 1 000 000 cycles
- Operating force: 4.5 +/-1.0N
- Travel: 0.75 +/-0.25mm
- Soldering conditions: auto-soldering: max.: 270°C, 5sec.
- Mounting: on pc-board
- Material: Base: thermoplastic UL94V-0, blue
Button: silicone, ivory
Contact: brass, gold plated
Terminal: brass, tin plated
Dome: stainless steel, silver plated



Tolerances: 0.1-1.0: ±0.05mm 1.0-5.0: ±0.1mm 5.0-10.0: ±0.2mm	Date	Name
	09/08	dr

TMP 1 + KTT107-B

Operating temperature	06/09	dr	knitter-switch	30 16 39	Page
Operating force	05/09	dr			1/1
Modifications	Date	Name			