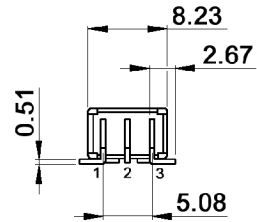
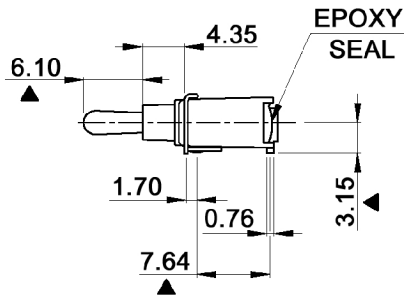
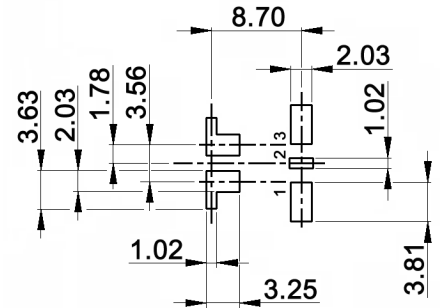


Toggle shown in pos. 1



P.C. MOUNTING



CONTACT ARRANGEMENT:

code for x	function	toggle in position 1	toggle opposite to pos. 1
D	On-On	2-3	1-2
F	On-Mom		

code for x	function	toggle in position 1	toggle in center	toggle opposite
E	On-Off-On	2-3	open	1-2
G	Mom-Off-Mom			
H	On-Off-Mom			

SWITCH RATING:

code for y	contacts and terminals	rating AC with real load	rating DC with real load
empty	silver-plated over nickel	1A/250V, 3A/120V	3A/28V
B	gold-plated over nickel	0.4VA/20V	0.4VA/20V
T	gold-plated over silver over nickel, terminals tin-plated	1A/250V, 3A/120V	3A/28V
G	gold-plated over silver over nickel	1A/250V, 3A/120V	3A/28V

Specifications:

- Contact resistance: 20mOhm max. at 2-4V DC
- Insulation resistance: 1 000MOhm min.
- Dielectric strength: 1 000V RMS
- Operating temperature: -30°C to +85°C
- Mechanical life: 50 000 make-and-break cycles
- Material: Case / bushing: glass filled nylon 4/6, flame retardant, heat stabilized (UL94V-0)
- Actuator: brass, chrome plated
- Switch support: brass, tin plated



Tolerances:			Date	Name	<h1>SST 1 xy-R</h1>
			03/06	dr	
Contact arrangement	10/09	dr	<b>knitter-switch</b>		<h2>30 08 36</h2>
Switch rating	10/09	dr			
P.C.B. Layout	10/07	dr			
Modifications	Date	Name			Page 1/1