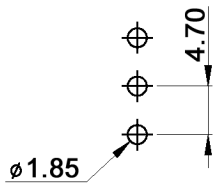


P.C. MOUNTING



SWITCH FUNCTION

Model. No.	POS. 1	POS. 2	POS. 3
MZME 1 DB	ON	NONE	ON
Term. Conn.	2-3	OPEN	2-1

Specifications:

- Contact rating: 0.4VA max.; 20V max. (AC or DC)
- Contact resistance: 10mOhm max. at 2-4V DC
- Insulation resistance: 1 000MOhm min.
- Dielectric strength: 1 000V RMS
- Operating temperature: -30°C to +85°C
- Mechanical life: 30 000 make-and-break cycles
- RoHS compliant
- Material: Case / bushing: glass filled nylon 66, flame retardant, heat stabilized (UL94V-0)  
 Actuator: brass, chrome plated  
 Switch support: brass, tin plated  
 Switch support retainer: stainless steel  
 Contact / terminal: copper alloy, gold plated

Maßstab		Datum	Name	<b>MZME 1 DB-PC T1</b>
Oberfläche		07/06	dr	
		<b>knitter-switch</b>		<b>30 09 26</b>
Zust	Änderung	Datum	Name	Blatt 1/1