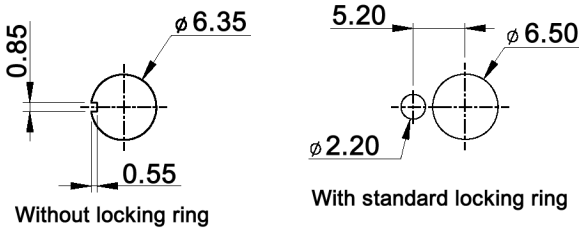
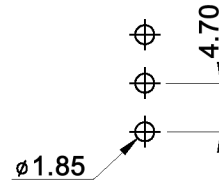


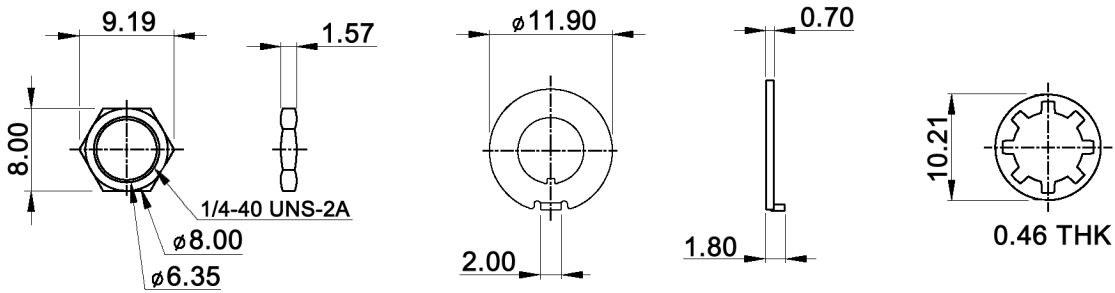
PANEL MOUNTING



P.C. MOUNTING



HARDWARE



SWITCH FUNCTION

Model No.	POS. 1	POS. 2	POS. 3
MZME 1 D	ON	NONE	ON
Term. Conn.	2-3	OPEN	2-1

Specifications:

Contact rating: 2A, 250V AC; 5A, 120V AC or 28V DC
 Contact resistance: 10mOhm max. at 2-4V DC
 Insulation resistance: 1 000MOhm min.
 Dielectric strength: 1 000V RMS
 Operating temperature: -30°C to +85°C
 Mechanical life: 30 000 make-and-break cycles
 ESD resistance: 10kV between actuator and terminals
 UL certified
 Material: Case / bushing: glass filled nylon 66, flame retardant, heat stabilized (UL94V-0)
 Actuator: glass filled nylon 6/6
 Contact / terminal: copper alloy, silver plated



Tolerances: 0.00: ±0.25mm 0.0: ±0.40mm	Date	Name
	03/08	dr
Panel mounting	07/08	dr
Modifications	Date	Name

MZME 1 D-PC-ESD

knitter-switch

30 14 11

Page

1/1