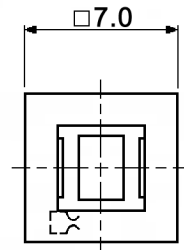
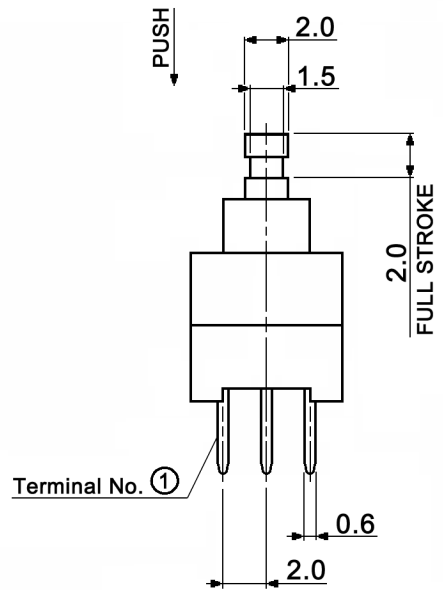
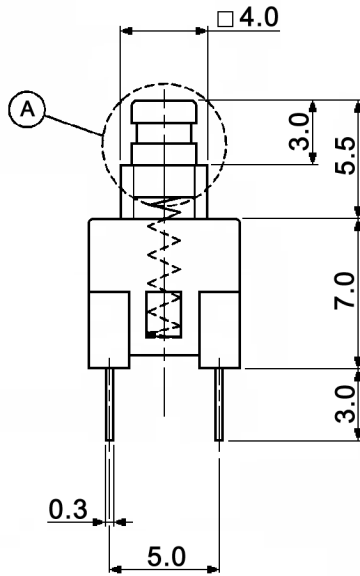
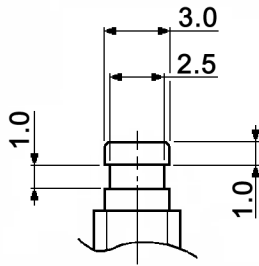
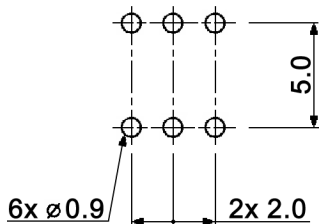


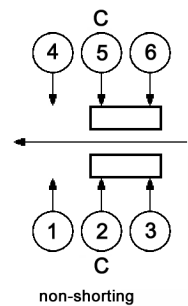
**DETAIL A**



**HOLE LAYOUT TOP VIEW**  $\pm 0.05$



**CIRCUIT DIAGRAM**  
C: COMMON PIN  
BOTTOM VIEW



**Specifications:**

- Contact rating: 0.1A, 30V DC
- Contact resistance: 30mOhm max.
- Insulation resistance: 100MOhm min. at 500V DC for 1 minute
- Dielectric strength: 500V AC (50/60Hz, 2mA) for 1 minute
- Operating temperature: -10°C to +60°C
- Mechanical life: 10 000 cycles
- Operating force: 180 +/-80gf
- Soldering conditions: wave soldering: 260°C max., 5sec.; pre-heat: 100°C max., 60sec. max.

**Material:**

- Terminal: brass strip, silver plated
- Contact clip: PBS, silver plated
- Spring: SWC, temper
- Housing: POM, white
- Case: nylon, black
- Push: POM, black



Tolerances: up to 10: ±0.2mm above 10-50: ±0.3mm	Date	Name
	10/10	dr

**MPSA 22D01-O**

Soldering conditions		10/10	dr	<b>knitter-switch</b>	<b>30 21 87</b>	Page
Modifications		Date	Name			1/1