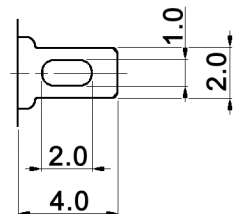


x	Contacts / terminals	Rating
empty	copper alloy, silver plated over nickel	3A, 125V AC
B	copper alloy, 2µm gold plated over 3µm nickel	min.: 1µA, 20mV DC max.: 25mA, 20V DC

CIRCUIT DIAGRAM

Type	Circuit arrangement	
MPS 103 Fx	(ON) 3-1	ON 3-2

TERMINAL DETAIL



Specifications:

Contact resistance: 10mOhm max. at 1.5mA, 200µV AC (1kHz)
 Insulation resistance: 1000MOhm min. at 500V DC
 Dielectric strength: 1000V AC for 1 minute
 Mechanical life: 100 000 cycles
 Electrical life: 25 000 cycles
 Operating force: 3 +/-1N (306 +/-102gf)
 Material:
 Locating ring: steel, zinc plated
 Tooth washer: carbon tool steel, zinc plated
 Hex nut: steel, nickel plated
 Bushing: zinc, nickel plated
 Plunger: brass, nickel plated
 Frame: stainless steel
 Case: diallyl phthalate resin, black



Tolerances: ±0.2mm		Date	Name	<h1>MPS 103 Fx</h1>
		01/06	dr	
			knitter-switch	<h2>30 07 72</h2>
Revised	02/11	dr		Page
Modifications	Date	Name		1/1