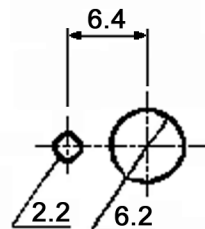
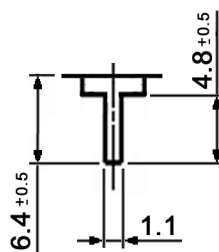


TERMINAL DETAIL



Specifications:

- Contact resistance: 10mOhm max.
- Insulation resistance: 1000MOhm min. at 500V DC
- Dielectric strength: 1000V, 50Hz for the duration of 1 minute
- Operating temperature: -20°C to $+80^{\circ}\text{C}$
- Mechanical / electrical life: 100 000 cycles min.
- Operating force: $3.92 \pm 1.96\text{N}$; max.: 39.2N
- Soldering conditions: hand-soldering: max. 60W, 420°C , 3sec.
wave-soldering: 270°C , 3sec. max.
- Switching function: on - on
- Travel: 2.5mm
- Mounting: bushing $M6 \times 0.75$ with locking plate, key 9mm
- Material: Case: phenol resin, black

x	Contacts / terminals	Rating
empty	copper alloy, silver plated over nickel	3A, 125V AC
B	copper alloy, $2\mu\text{m}$ gold plated over $3\mu\text{m}$ nickel	min.: $1\mu\text{A}$, 20mV DC max.: 25mA, 20V DC



Tolerances:		Date	Name	<h1>MPS 103 Dx-PC</h1>
		03/06	dr	
		knitter-switch		<h2>30 08 28</h2>
Plating	03/11	dr		Page 1/1
Modifications	Date	Name		