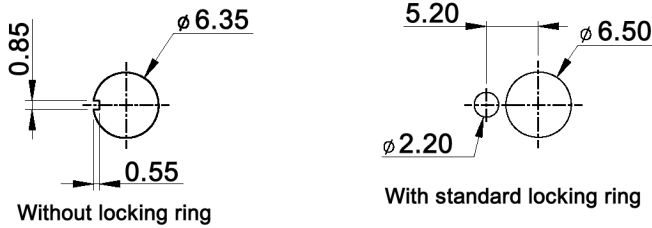
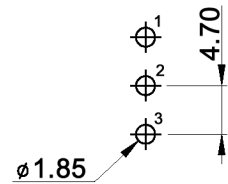


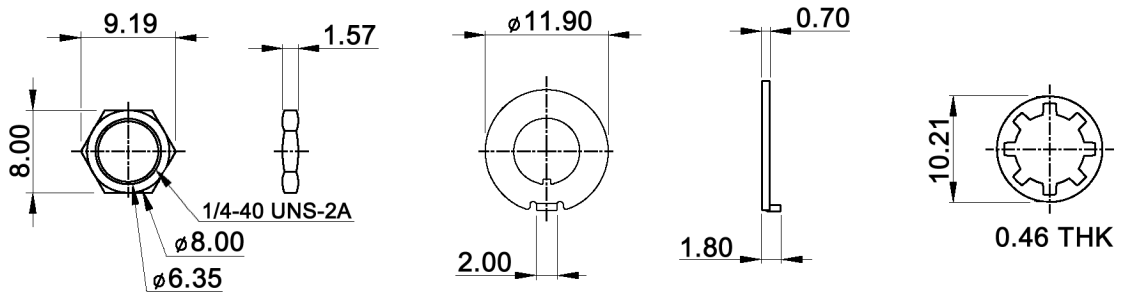
PANEL MOUNTING



P.C. MOUNTING



HARDWARE



SWITCH FUNCTION

Model No.	POS. 1	POS. 2
	MPME 1 FB	ON
Term. Conn.	1-3	1-2

Specifications:

- Contact rating: 0.4VA max.; 20V max. (AC or DC)
- Contact resistance: 20mOhm max. at 2-4V DC
- Insulation resistance: 1 000MOhm min.
- Dielectric strength: 1 500V RMS
- Operating temperature: -30°C to +85°C
- Mechanical life: 50 000 make-and-break cycles
- ESD resistance: 10kV between actuator and terminals
- Material: Case / bushing: glass filled nylon 6/6, flame retardant, heat stabilized (UL94V-0)
Plunger: glass filled nylon (UL94V-0)
Contact / terminal: copper alloy, gold plated over nickel plated



Tolerances: 0.00: ±0.25mm 0.0: ±0.40mm	Date	Name
	07/08	dr
Modifications	Date	Name

MPME 1 FB-PC ESD

knitter-switch

30 15 26

Page

1/1