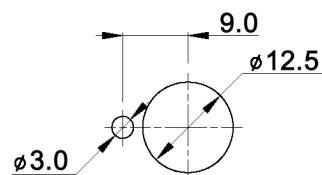


**PANEL MOUNTING**



**CONTACT ARRANGEMENT**

code for x	function	actuator position/connected terminals			
D	On-On (alternating)	Pos.1:	1-2	Pos. 2:	2-3
F	Mom-On	Rest position:	1-2	Pressed down:	2-3

**Specifications:**

- Contact rating:** 3A, 250V AC / 6A, 125V AC  
4A, 30V DC / 5A, 12V DC  
6A, 6V DC
- Contact resistance:** 20mOhm max.
- Insulation resistance:** 1 000MOhm min. at 500V DC
- Dielectric strength:** 1 500V, 50Hz for the duration of 1 minute
- Operating temperature:** -45°C to +140°C
- Mechanical life:** min. 30 000 cycles
- Soldering conditions:** hand-soldering: max.: 420°C, 3sec., 60W  
auto-soldering: max.: 270°C, 5sec.
- Mounting instruction:** max. torque: 137Ncm
- Material:** Terminal / contact: brass, silver plated  
Case: DAP  
Housing: stainless steel, CNS9265  
Bushing: copper alloy, C3604BD nickel plated  
Actuator: copper alloy, C3604BD chrome plated
- Included accessories:** 2 pcs. nut 15/32-32, nickel plated, 14mm wrench size  
1 pc. tooth washer  
1 pc. locking washer



Tolerances:	0.00: ±0.25mm	Date	Name
	0.0: ±0.40mm	06/09	dr

**MPG 106 x-PC**

Dimension	01/11	dr	<b>knitter-switch</b>	<b>30 18 49</b>	Page
Travel	02/10	dr			1/1
Actuator length	07/09	ok			
Modifications	Date	Name			