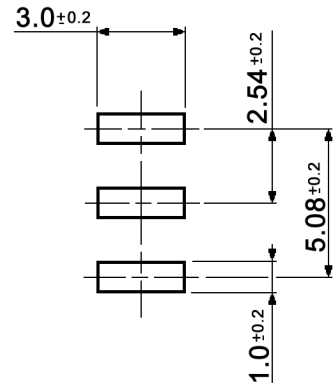
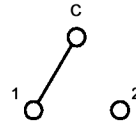


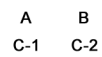
P.C.B. LAYOUT



CIRCUIT DIAGRAM

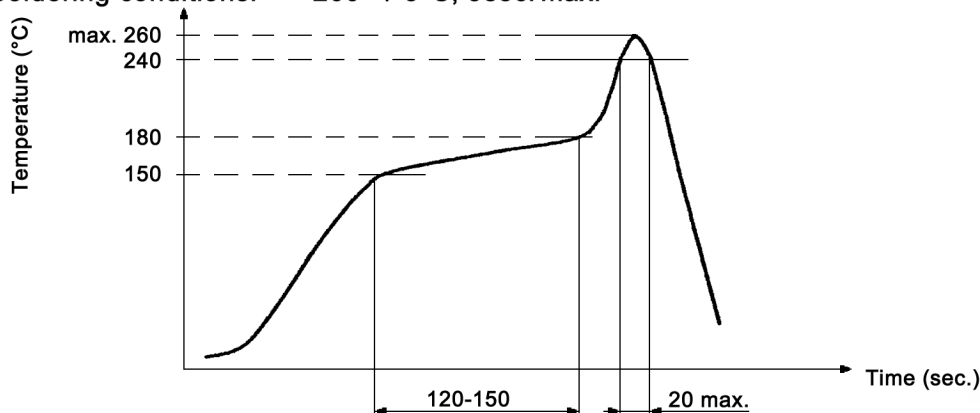


SWITCH POSITION



Specifications:

- Contact rating: 0.2A, 24V; 0.5A, 12V
- Contact resistance: 50mOhm max.
- Insulation resistance: 10 000MOhm min. at 500V DC
- Dielectric strength: 500V AC for 1 minute (2mA)
- Operating temperature: -25°C to +70°C
- Storage temperature: -40°C to +85°C
- Mechanical life: 5 000 cycles
- Operating force: 800gf max.
- Soldering conditions: 260 +/-3°C, 5sec. max.



Tolerances: 0 - 1: ±0.1mm 1 - 4: ±0.3mm 4 - 16: ±0.5mm	Date	Name
	02/12	dr

MMS 1010 D-RT

knitter-switch

30 25 32

Page

1/2

Modifications	Date	Name
---------------	------	------

Material:

Case: PA9T glass reinforced nylon, black

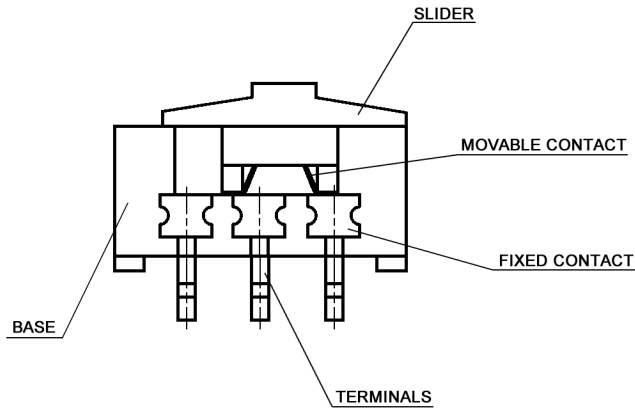
Slider: PA46 glass reinforced nylon, ivory

Terminals: brass, 0.075µm gold plated over 1µm nickel

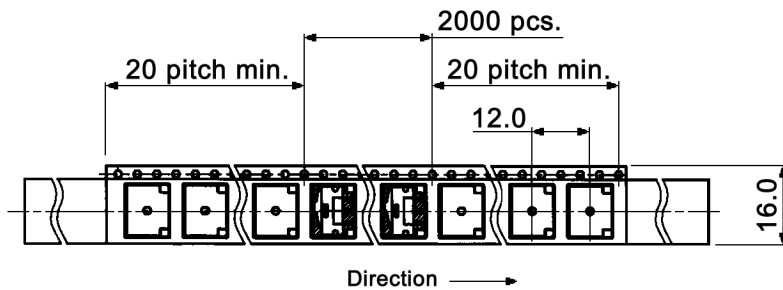
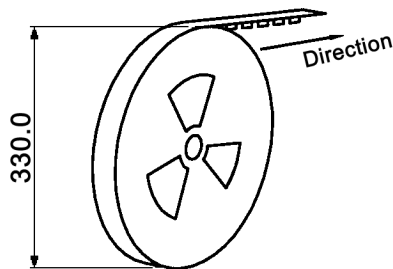
Fixed contact: brass, 0.075µm gold plated over 1µm nickel

Movable contact: phosphor bronze, 0.125µm gold plated over 1µm nickel

CONSTRUCTION



Packing:



Tolerances: 0 - 1: ±0.1mm 1 - 4: ±0.3mm 4 - 16: ±0.5mm	Date	Name
	02/12	dr

MMS 1010 D-RT

Modifications	Date	Name

knitter-switch

30 25 32

Page

2/2