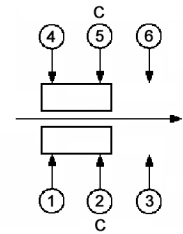
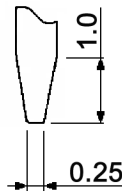


CIRCUIT DIAGRAM



C: COMMON PIN

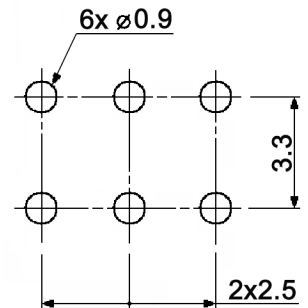
A



Specifications:

- Contact rating: 0.15A, 12V DC  
300mA, 6V DC
- Contact resistance: 70mOhm max.
- Insulation resistance: 100MOhm min. at 500V DC for 1 minute
- Dielectric strength: 500V AC (50/60Hz, 2mA) for 1 minute
- Operating temperature: -25°C to +85°C
- Mechanical life: 5 000 cycles min.
- Operating force: 200gf +/-100gf
- Soldering conditions: 260°C +/-5°C; 5 +/-1sec.
- RoHS compliant
- Material: Terminal: brass strip, silver plated  
Cover: SUS, washing  
Slider: PA 46, natural  
Contact plate: C7025, silver plated  
Case: PA 46, black

HOLE LAYOUT TOP VIEW  $\pm 0.05$



Tolerances: up to 10: ±0.2mm above 10-50: ±0.3mm	Date	Name
	11/07	dr

MMP 221.

Contact rating		12/07	dr	<b>knitter-switch</b>	<b>21 13 14</b>	Page
Modifications		Date	Name			1/1