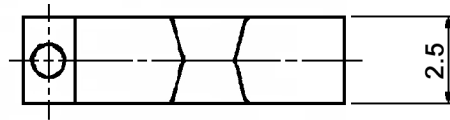
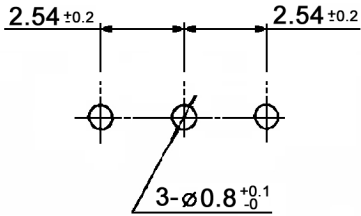


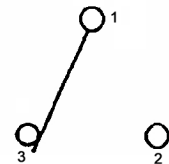
P.C. LAYOUT



Specifications:

- Contact rating:** 0.5A, 12V DC; 0.3A, 24V (AC/DC)
 min. current: 1mA
Contact resistance: 30mOhm max.
Insulation resistance: 10MOhm min. at 500V DC
Dielectric strength: 500V AC for 1 minute
Operating temperature: -40°C to +85°C
Storage temperature: -40°C to +85°C
Mechanical life: 1000 cycles
Electrical life: 1000 cycles
Operating force: 800gf max.
Soldering conditions: 270°C, 5sec.
Humidity test: Test conditions: measured 1hour after exposure to ambient, after 96hours exposure at 40 +/-2°C, 90-95%R.H
 Insulation resistance: 10MOhm min. at 500V DC
 Dielectric strength: 500V AC for 1 minute
Saline spray test: 24hours
Material: Case / slide: glass fiber reinforce polyamide (UL94V-0)
 Terminal: 0.05µm gold plated over 0.2µm nickel

SWITCH POSITION



Tolerances:	Date	Name
	05/06	dr
Revised	02/11	dr
Mechanical life	07/07	dr
Modifications	Date	Name

MMP 1010 D-1

30 09 03

Page

1/1

knitter-switch