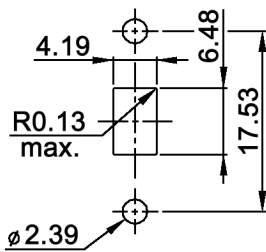
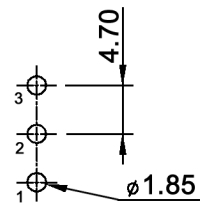


PANEL MOUNTING



P.C. MOUNTING



SWITCH FUNCTION

Model No.	POS. 1	POS. 2	POS. 3
MFS 126	ON	OFF	ON
Term. Conn.	2-1	OPEN	2-3

Specifications:

Contact rating: 5A, 120V AC or 28V DC; 2A, 250V AC
 Contact resistance: 10mOhm max. at 2-4V DC
 Insulation resistance: 1 000MOhm min.
 Dielectric strength: 1 000V RMS
 Operating temperature: -30°C to +85°C
 Mechanical life: 30 000 make-and-break cycles
 Material: Case: diallyl phthalate (DAP) (UL94V-0)
 Actuator: nylon, black
 Housing: stainless steel
 Contact: gold over silver plated



Tolerances: 0.00: ±0.25mm 0.0: ±0.40mm	Date	Name
	09/08	dr
Modifications	Date	Name

MFS 126 EG-M3

knitter-switch

30 15 81

Page

1/1