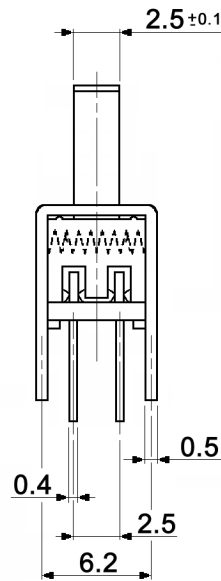
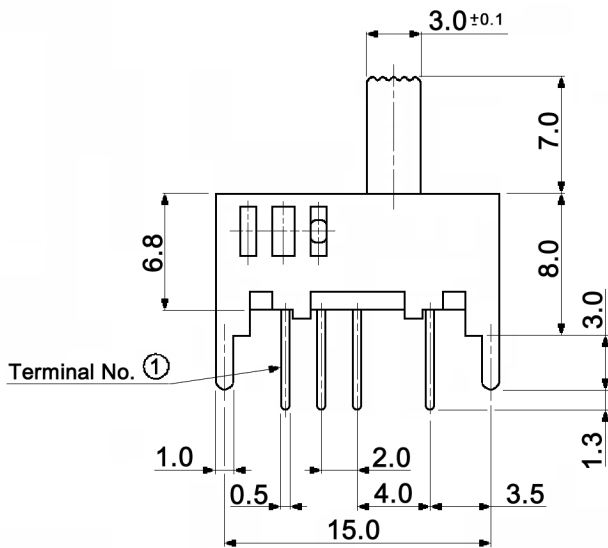
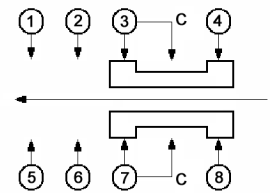
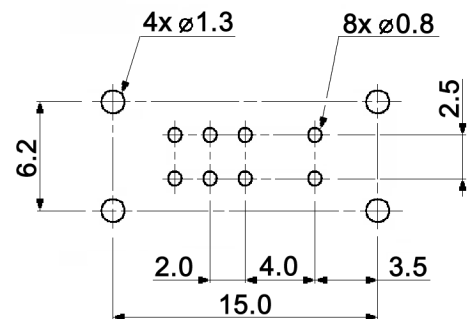


**CIRCUIT DIAGRAM**  
C: COMMON PIN  
BOTTOM VIEW



**HOLE LAYOUT**  $\pm 0.05$



**Specifications:**

- Contact rating: 0.2A, 30V DC
- Contact resistance: 20mOhm max.
- Insulation resistance: 100MOhm min. at 500V DC for 1 minute
- Dielectric strength: 500V AC (50/60Hz, 2mA) for 1 minute
- Operating temperature: -10°C to +60°C
- Mechanical life: 10 000 cycles
- Operating force: a-b c-b: 200gf +/-100gf  
b-a b-c: 250gf +/-150gf
- Soldering conditions: 260 +/-5°C, 5 +/-1sec.
- Material: Terminal: brass strip, silver plated  
Base: phenolic resin, natural  
Contact clip: phosphor bronze, silver plated  
Steel ball: carbon steel, natural  
Spring: SWC, temper  
Frame: SPCC, nickel plated  
Slider: POM, black



Tolerances: up to 10: ±0.2mm above 10-50: ±0.3mm	Date	Name
	01/09	dr

**MFP 223 P-1.3**

**knitter-switch**

**30 16 89**

Page

1/1

Modifications	Date	Name
---------------	------	------