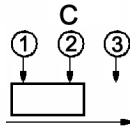
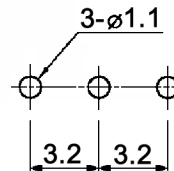


CIRCUIT DIAGRAM



C: COMMON PIN
BOTTOM VIEW

HOLE LAYOUT ± 0.05



Material:

- Terminal: brass strip, silver plated
- Base: phenolic resin, natural
- Frame: SPCC, tin plated
- Contact plate: brass strip, silver plated
- Spring: SWC, temper
- Slider: PA 66, black



Tolerances: up to 10: $\pm 0.2\text{mm}$ above 10-50: $\pm 0.3\text{mm}$	Date	Name
	03/07	dr
Tolerances	07/10	dr
Modifications	Date	Name

MFP 120 R-K

knitter-switch

30 10 87

Page

1/1