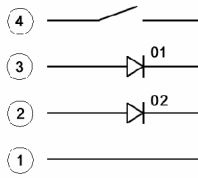


CIRCUIT DIAGRAM



"xx"	LED color	
	01	02
OB	orange	blue
BG	green	blue
GR*	red	green

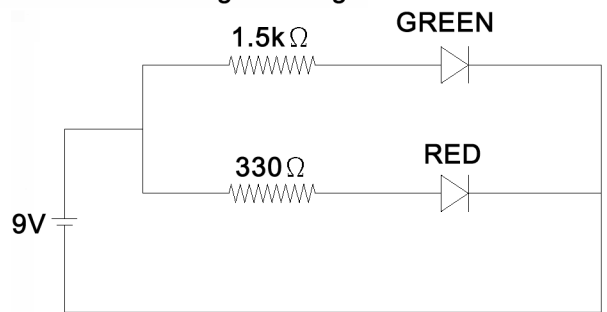
LED color	Power dissipation (mW)	DC Forward current (mA)	Peak forward current (mA)	Item IF=20mA	Typ (V)	Max. (V)
red	75	30	185	forward voltage	1.95	2.5
orange	75	30	195	forward voltage	2.1	2.5
blue	105	30	150	forward voltage	3.3	4.0
green	120	30	100	forward voltage	3.2	4.0

*

Suggestion for RG blending to orange

Specifications:

Contact rating: 10mA, 5V DC (1mA min.)
 Contact resistance: 100mOhm max.
 Insulation resistance: 100MOhm min. at 250V DC / 1mA
 Dielectric strength: 300V AC for 1 minute
 Operating temperature: -40°C to +85°C
 Rotational life: 30 000 cycles
 Detent torque: 5 +/-3mNm
 No. of detents: 24 detents; step angle: 15° +/-3°
 Soldering conditions: 260 +/-5°C, 3 +/-1.0sec.
 Switch: Travel: 0.5⁺⁰_{-0.3} mm
 Mechanical life: 20 000 cycles
 Operating force: 4 +/-2N



Tolerances:	Date	Name
≤10: ±0.3mm 10-100: ±0.5mm	11/08	dr

MERP12-24225xx

knitter-switch

30 16 51

Page

2/2

Modifications Date Name