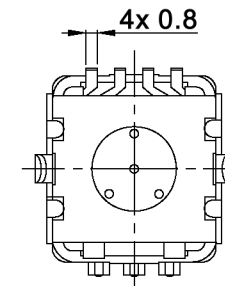
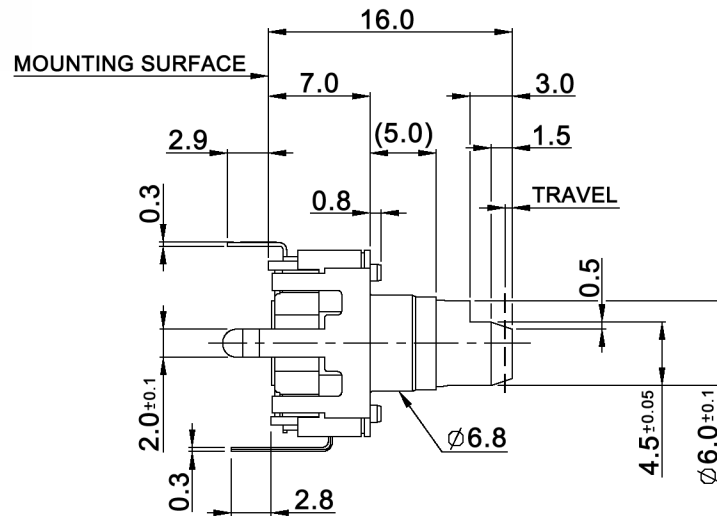
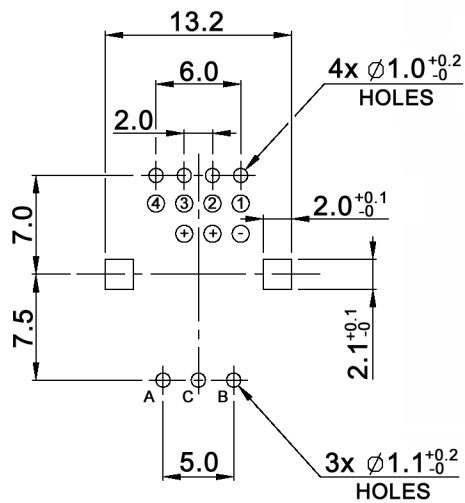


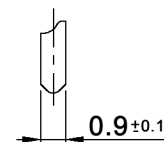
SHAFT FLAT IS OPTIONAL ANGLE



P.C.B. MOUNTING
 VIEWED FROM MOUNTING SIDE
 P.C.B. t=1.5mm
 tolerance: +/-0.1mm



TERMINAL DETAIL

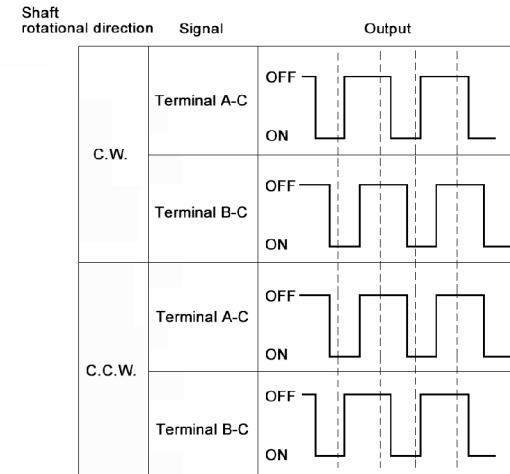


Tolerances: ≤10: ±0.3mm 10-100: ±0.5mm		Date	Name	<h1>MERP12-12116xx</h1>
		12/10	dr	
		knitter-switch		<h2>30 22 72</h2>
Modifications		Date	Name	Page 1/3

Specifications:

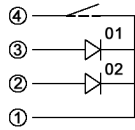
Contact rating: 0.5mA, 5V DC
 Contact resistance: 100mOhm max.
 Insulation resistance: 100MOhm min. at 300V AC for 1 minute
 Dielectric strength: 300V AC for 1 minute
 Operating temperature: -40°C to +85°C
 Storage temperature: -40°C to +85°C
 Rotational life: 30 000 cycles
 Detent torque: 30-200gf.cm
 No. of pulses: 12
 No. and pos. of detents: 24 detents; step angle: 15° +/-3°
 Soldering conditions: 260 +/-5°C, 5 +/-1sec.
 Switch: Travel: 0.5 +/-0.3mm
 Mechanical life: 20 000 cycles
 Operating force: 450 +/-200gf

Output signal format



Tolerances: ≤10: ±0.3mm 10-100: ±0.5mm	Date	Name	<h1>MERP12-12116xx</h1>
	12/10	dr	
			<h2>knitter-switch</h2>
			<h1>30 22 72</h1>
			Page
			2/3
Modifications	Date	Name	

LED CIRCUIT DIAGRAM



xx	LED colour	
	01	02
OB	orange	blue
BG	green	blue
GR	red	green

LED CHARACTERISTIC

LED colour		Power dissipation (mW)	DC Forward current (mA)	Test conditions IF=20mA	
				Forward voltage (V)	
				Typ.	Max.
orange / blue	orange	75	30	2.1	2.5
	blue	105	30	3.3	4.0
green / red	green	120	30	3.2	4.0
	red	75	30	1.95	2.5
blue / green	blue	120	30	3.3	4.0
	green	120	30	3.2	4.0



Tolerances: ≤10: ±0.3mm 10-100: ±0.5mm		Date	Name	<h1>MERP12-12116xx</h1>
		12/10	dr	
		knitter-switch		<h2>30 22 72</h2>
				Page 3/3
Modifications	Date	Name		