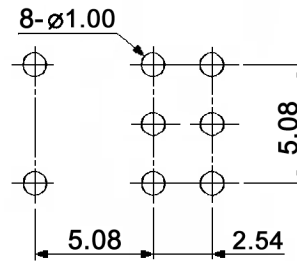
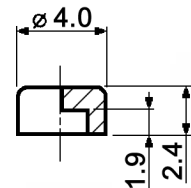


P.C. LAYOUT



Plastic caps:



Specifications:

Contact rating: max.: 0.4VA, 28V DC
 min.: 1µA, 20mV DC
 Contact resistance: 100mOhm max.
 Insulation resistance: 500MOhm min. at 250V DC
 Operating temperature: -40°C to +85°C
 Storage temperature: -40°C to +85°C
 Mechanical life: min. 30 000 cycles
 Soldering conditions: auto-soldering: max.: 250 +/-5°C, 7sec.
 max.: 270 +/-5°C, 5sec.

black KF 4105
 grey KF 4107
 red KF 4109
 white KF 4110

Mounting: on pc-board
 ESD resistance: 8kV min. (between lever and terminals)
 Switching function: on - mom (when looking at the brand name, the normally closed contact is on the right-hand side)
 Material: Contacts: phosphor bronze, gold plated
 Terminals: PC terminals, crimped, phosphor bronze, gold plated
 Case / lever: PES, UL94V-0, washable



Tolerances:	Date	Name
	01/09	dr
Temperatures	04/11	dr
Modifications	Date	Name

FP 2 F-RA

knitter-switch

30 16 88

Page

1/1