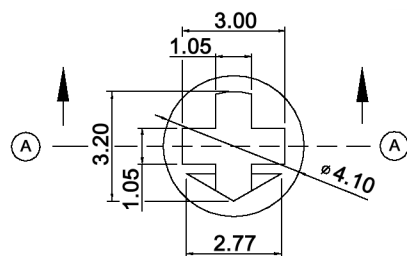
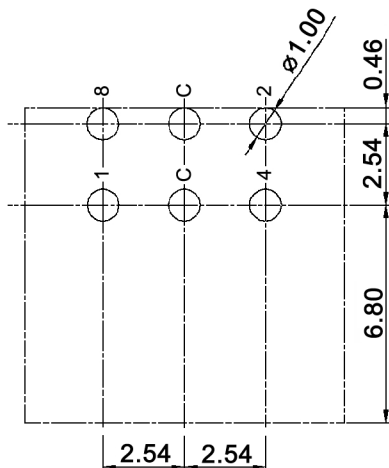
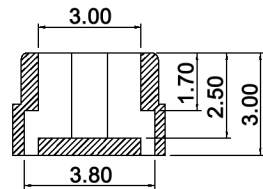


P.C.B. LAYOUT



SECTION A-A



Hexadecimal

	Real coded				
	C	1	2	4	8
0	●				
1	●	●			
2	●		●		
3	●	●	●		
4	●			●	
5	●	●		●	
6	●		●	●	
7	●	●		●	
8	●				●
9	●	●			●
A	●		●		●
B	●	●	●		●
C	●			●	●
D	●	●		●	●
E	●		●	●	●
F	●	●	●	●	●



Tolerances:	Date	Name	knitter-switch
	10/08	dr	
Revised	03/12	dr	30 16 11
IP rating	06/09	dr	
Modifications	Date	Name	Page
			1/2

DRR 60016-1 CH

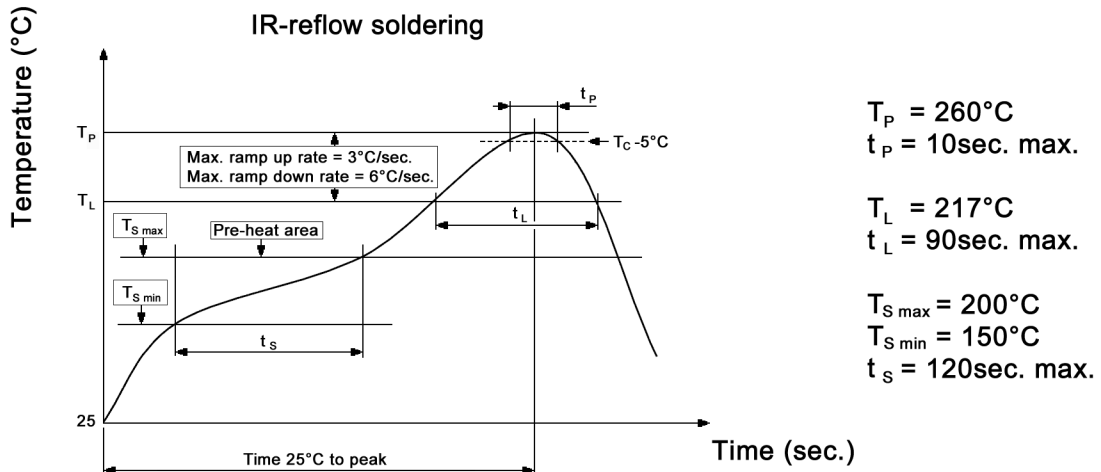
30 16 11

Page

1/2

Specifications:

Contact rating: non-switching: 400mA, 24V DC
 switching: 150mA, 24V DC
Contact resistance: 80mOhm max.
Insulation resistance: 100MOhm min. at 250V DC for 1 minute +/-5sec.
Dielectric strength: 250V AC (50/60Hz) for 1 minute
Operating temperature: -60°C to +125°C
Storage temperature: -60°C to +125°C
Electrical life: 10 000 cycles
Operating force: 700gf/cm. max.
Material: Cover: LCP
 Base: LCP
 Actuator: PA66, light grey
 Contact / terminal: phosphor bronze, min. 0.07µm gold plated over
 min. 0.1µm nickel
 PCB: epoxy seal, min. 0.05µm gold plated
 O-ring: silicone
IP rating: IP67
Soldering conditions:



Tolerances:			Date	Name	DRR 60016-1 CH
			10/08	dr	
			knitter-switch		30 16 11
Modifications			Date	Name	Page 2/2