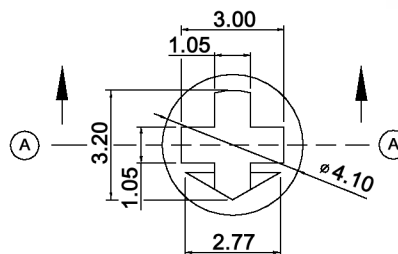
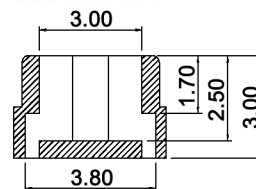


BCD

| | Real coded | | | | |
|---|------------|---|---|---|---|
| | C | 1 | 2 | 4 | 8 |
| 0 | ● | | | | |
| 1 | ● | ● | | | |
| 2 | ● | | ● | | |
| 3 | ● | ● | ● | | |
| 4 | ● | | | ● | |
| 5 | ● | ● | | ● | |
| 6 | ● | | ● | ● | |
| 7 | ● | ● | ● | ● | |
| 8 | ● | | | | ● |
| 9 | ● | ● | | | ● |



SECTION A-A



| | | |
|---------------|-------|------|
| Tolerances: | Date | Name |
| | 09/08 | dr |
| | | |
| | | |
| | | |
| | | |
| IP rating | 06/09 | dr |
| Modifications | Date | Name |

DRR 60010 CH

knitter-switch

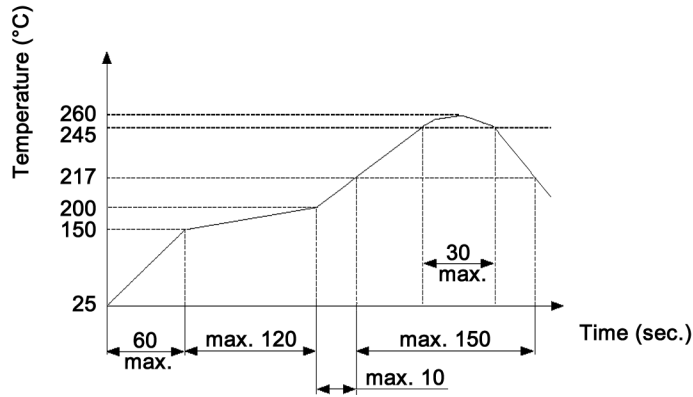
30 15 96

Page

1/2

Specifications:

Contact rating: non-switching: 400mA, 24V DC
 switching: 150mA, 24V DC
Contact resistance: 80mOhm max.
Insulation resistance: 100MOhm min. at 250V DC for 1 minute +/-5sec.
Dielectric strength: 250V AC (50/60Hz) for 1 minute
Operating temperature: -60°C to +125°C
Storage temperature: -60°C to +125°C
Mechanical life: 10 000 cycles
Operating force: 700gf/cm. max.
Soldering conditions: auto-soldering: 260 +/-5°C, 5 +/-1sec.
 reflow soldering:



Material: Cover: LCP, black
 Base: LCP
 Actuator: PA66
 Detent spring: STS
 Contact / terminal: phosphor bronze, min. 0.07µm gold plated over
 min. 0.1µm nickel
 PCB: epoxy seal, min. 0.05µm gold plated
 O-ring: silicone
IP rating: IP67



| | | | | | | | |
|---------------|------|------|-----------------------|------|---------------------|-----------------|------|
| Tolerances: | | | Date | Name | DRR 60010 CH | 30 15 96 | Page |
| | | | 09/08 | dr | | | |
| | | | knitter-switch | 2/2 | | | |
| | | | | | | | |
| | | | | | | | |
| Modifications | Date | Name | | | | | |