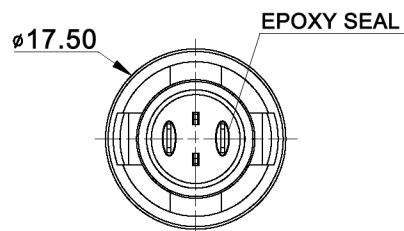
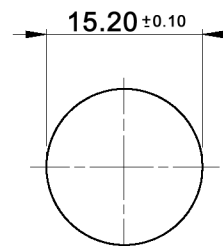
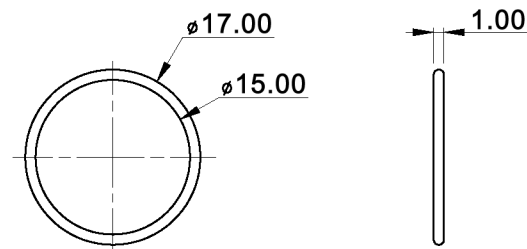


PANEL CUT-OUT



RUBBER WASHER



Tolerances: 0.00: ±0.25mm 0.0: ±0.40mm		Date	Name	<b>DPWL 11 CG-S-xy</b>
		04/10	dr	
				<b>knitter-switch</b>
				<b>30 20 79</b>
				Page 1/2
Modifications	Date	Name		

**Specifications:**

Contact rating: max.: 400mA, 32V AC; 100mA, 50V DC; 125mA, 125V AC  
 Contact resistance: 50mOhm max.  
 Insulation resistance: 1GOhm min at 500V DC  
 Dielectric strength: 1 000V AC RMS  
 Mechanical life: 1 000 000 cycles  
 Electrical life: 500 000 cycles at full load  
 Operating force: 2N - 5N  
 Contact bounce: 10 ms  
 Soldering conditions: 350°C max., 5sec.  
 Total travel: 1.5mm  
 Panel thickness: 3.0 +/-0.25mm  
 Water proofing: IP 67  
 Material: Case: diallyl phthalate (DAP) (UL94V-0)  
 Cap / bushing: polyamide 6/6  
 Terminal / contacts: gold over silver plated

**SWITCH FUNCTION**

Model No.	POS. 1	POS. 2
DPWL 11 CG	OFF	MOM
Term. Conn.	OPEN	SHORT

X=CAP COLOR	
W	white
K	black
R	red
O	orange
Y	yellow
G	green
B	blue

Y=LED COLOR	
W	white
R	red
Y	yellow
G	green
B	blue

Lens appearance	Color	Electro-optical data (at 20mA)				Viewing angle
		Vf (V)		Iv (mcd)		
		Typ.	max.	min.	Typ.	
Water clear	white ( AT 5mA)	3.2	3.6	94.0	250.0	35°
	super red	1.7	2.6	28.0	60.0	
	super yellow	2.1	2.6	94.0	200.0	
	super green	2.0	2.6	42.0	100.0	
	super blue	3.2	3.6	63.0	150.0	



Tolerances: 0.00: ±0.25mm 0.0: ±0.40mm		Date	Name	<b>DPWL 11 CG-S-xy</b>
		04/10	dr	
		<b>knitter-switch</b>		<b>30 20 79</b>
				Page
				2/2
Modifications	Date	Name		