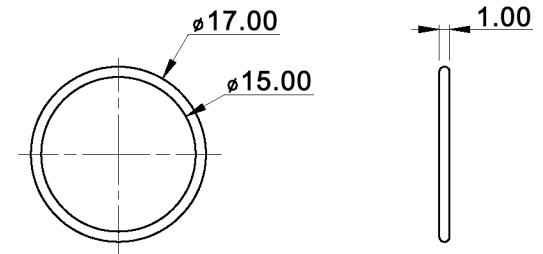
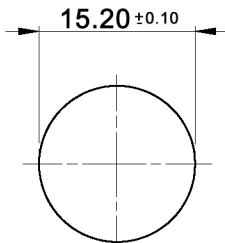


RUBBER WASHER



PANEL CUT-OUT



Tolerances: 0.00: ±0.25mm 0.0: ±0.40mm			Date	Name	<b>DPWL 11 CG-S-xy-FO</b>
			01/10	dr	
			<b>knitter-switch</b>		<b>30 20 03</b>
LED colour table	06/10	dr			Page
Modifications	Date	Name			1/2

**Specifications:**



**Contact rating:** max.: 400mA, 32V AC; 100mA, 50V DC; 125mA, 125V AC  
**Contact resistance:** 50mOhm max.  
**Insulation resistance:** 1GOhm min at 500V DC  
**Dielectric strength:** 1 000V AC RMS  
**Operating temperature:** -30°C to +85°C  
**Mechanical life:** 1 000 000 cycles  
**Electrical life:** 500 000 cycles at full load  
**Operating force:** 2N - 5N  
**Contact bounce:** 10 ms  
**Soldering conditions:** 350°C max., 5sec.  
**Total travel:** 1.5mm  
**Panel thickness:** 3.0 +/-0.25mm  
**Water proofing:** IP 67  
**Material:** Case: diallyl phthalate (DAP) (UL94V-0)  
 Cap: polyamide 6/6  
 Bushing: polyamide 6/6, rough surface  
 Terminal / contacts: gold over silver plated

Lens appearance	Colour	Electro-optical data (at 20mA)				Peak wavelength	Viewing angle
		Vf (V)		Iv (mcd)			
		Typ.	max.	Typ.	max.		
Water clear	white (at 5mA)	3.2	3.6	250.0	94.0	x=0.28 y=0.29	35°
	super red	1.7	2.6	60.0	28.0	660.0	
	super yellow	2.1	2.6	200.0	94.0	590.0	
	super green	2.0	2.6	100.0	42.0	570.0	
	super blue	3.2	3.6	150.0	63.0	470.0	
	super yellow	2.1	2.6	200.0	94.0	590.0	
	super green	2.0	2.6	80.0	42.0	570.0	
	super yellow	2.1	2.6	200.0	94.0	590.0	
	super blue	3.2	3.6	200.0	94.0	460.0	
	super yellow	2.1	2.6	100.0	63.0	590.0	
	super red	2.0	2.6	90.0	42.0	630.0	
	super green	2.0	2.6	90.0	42.0	570.0	
	super red	2.0	2.6	90.0	42.0	630.0	
	super blue	3.2	3.6	200.0	94.0	460.0	
	super green	2.0	2.6	100.0	42.0	570.0	
super blue	3.2	3.6	200.0	94.0	460.0		

X=CAP COLOR	
W	white
K	black
R	red
O	orange
Y	yellow
G	green
B	blue

Y=LED COLOR	
W	white
R	red
Y	yellow
G	green
B	blue
YG	yellow / green
YB	yellow / blue
YR	yellow / red
RG	red / green
RB	red / blue
GB	green / blue

**SWITCH FUNCTION**

Model No.	POS. 1	POS. 2
		
DPWL 11 CG	OFF	MOM
Term. Conn.	OPEN	SHORT



Tolerances: 0.00: ±0.25mm 0.0: ±0.40mm		Date	Name	<b>DPWL 11 CG-S-xy-FO</b>
		01/10	dr	
		<b>knitter-switch</b>		<b>30 20 03</b>
Modifications		Date	Name	Page 2/2