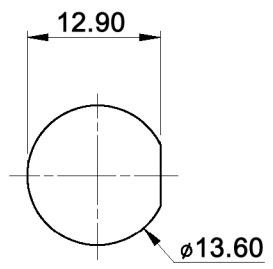
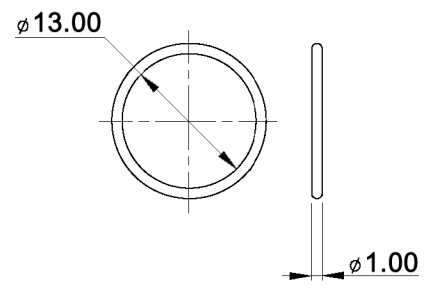
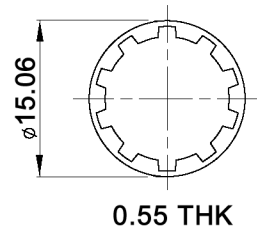
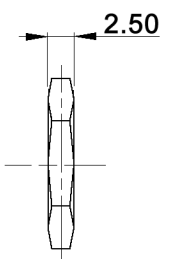
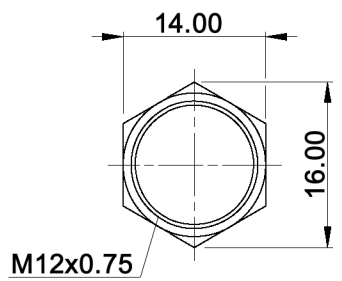


PANEL CUT-OUT



HARDWARE:



Tolerances: 0.00: ±0.25mm 0.0: ±0.40mm		Date	Name
		03/09	dr
LED color table	06/10	dr	knitter-switch
LED color table	11/09	dr	
Modifications	Date	Name	

DPWL 1 AG-xy

30 17 60

Specifications:

Contact rating: max.: 100mA, 24V DC
 Contact resistance: 100mOhm max.
 Insulation resistance: 1GOhm min. at 500V DC
 Dielectric strength: 1 000V AC RMS
 Electrical life: 200 000 cycles at full load
 Operating force: 4.5 - 6.5N
 Torque: 0.5Nm max. applied to nut
 Soldering conditions: 350°C max., 5sec.
 Panel thickness: min.: 1.5mm; max.: 4.0mm
 Total travel: 2.5mm
 Switching function: off - on
 Contact bounce: 10ms
 Material: Case / cap / bushing: polyamide 6/6
 Terminal / contact: gold over silver plated
 IP rating: IP 67

Lens appearance	Colour	Electro-optical data (at 20mA)				Peak wavelength	Viewing angle
		Vf (V)		Iv (mcd)			
		Typ.	max.	Typ.	max.		
Water clear	white	3.5	4.0	370.0	-	x=0.32 y=0.31	80°
	super red	2.0	2.6	85.0	-	625.0	
	super yellow	2.1	2.6	80.0	-	590.0	
	super green	2.0	2.6	30.0	-	575.0	
	super blue	3.5	4.0	250.0	-	470.0	
	super yellow super green	2.0	2.6	40.0 20.0	-	590.0 570.0	130°
	super yellow super red	2.0	2.6	35.0 40.0	-	590.0 625.0	
	super red super green	2.0	2.6	50.0 13.0	-	625.0 570.0	

x	Cap color	y	LED color
W	white	W	white
K	black	R	red
R	red	Y	yellow
O	orange	G	green
Y	yellow	B	blue
G	green	YG	yellow / green
B	blue	YR	yellow / red
		RG	red / green



Tolerances: 0.00: ±0.25mm 0.0: ±0.40mm		Date	Name	<h1>DPWL 1 AG-xy</h1>
		03/09	dr	
			<h2>knitter-switch</h2>	<h1>30 17 60</h1>
Modifications	Date	Name		