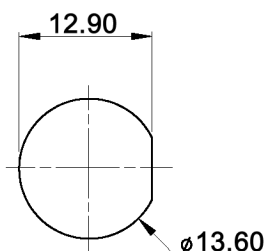
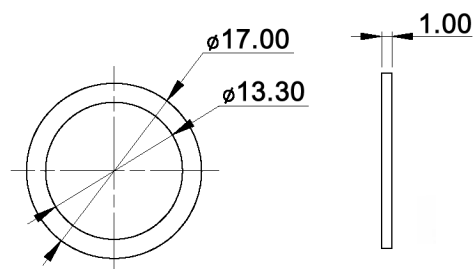


PANEL CUT-OUT



RUBBER WASHER



Specifications:

- Contact rating: max.: 400mA, 32V AC; 100mA, 50V DC; 125mA, 125V AC
- Contact resistance: 50mOhm max.
- Insulation resistance: 1GOhm min. at 500V DC
- Dielectric strength: 1 000V AC
- Operating temperature: -30°C to +85°C
- Mechanical life: 1 000 000 cycles
- Electrical life: 500 000 cycles
- Operating force: 3N +/-1N
- Soldering conditions: 300°C max., 3sec.
- Switching function: off - mom
- Travel: 1.5mm
- Panel thickness: 0.8mm min.; 1.8mm max.
- Water proofing: IP67
- Material: Case: DAP UL94V-0
Bushing / cap: polyamide 6/6
Terminal / contact: gold over silver plated

X=CAP COLOR	
W	white
K	black
R	red
O	orange
Y	yellow
G	green
B	blue



Tolerances: 0.00: ±0.25mm 0.0: ±0.40mm	Date 07/09	Name dr

DPW 1 CGM3 S-x

knitter-switch

30 18 86

Page

1/1

Modifications	Date	Name
---------------	------	------